



\*\*\*IF YOU NOT FEEL COMFORTABLE PERFORMING THE STEPS LISTED BELOW, SEEK PROFESSIONAL ASSISTANCE WITH THIS INSTALATION. MARTIN OFF-ROAD IS NOT LIABLE FOR ANY DAMAGE, INJURY, OR LOSS DURING THE USE OF PRODUCTS. THE USER ASSUMES ALL RESPONSIBLY AND RISK ASSOCIATED WITH THE INSTALLALATION AND USE OF THESE PRODUCTS\*\*\*

PART NUMBER	DESCRIPTION	QUANTITY
A	¼"-20 X 1" MACHINE SCREW	28
B	¼" LOCK WASHER	28
C	¼" FLAT WASHER	28

STEP 1 – LAY OUT THE SIDE RAILS AND CROSSBARS USED IN THE RACK ASSMEBY (FIGURE 1.1).

STEP 2 – USING THE CROSSBAR HARDWARE (FIGURE1.2), INSTALL THE CROSSBARS TO THE SIDE RAILS, EXCLUDING CROSSBARS POSITIONED OVER THE MOUNT LOCATIONS (FIGURE 1.3).



FIGURE 1.1

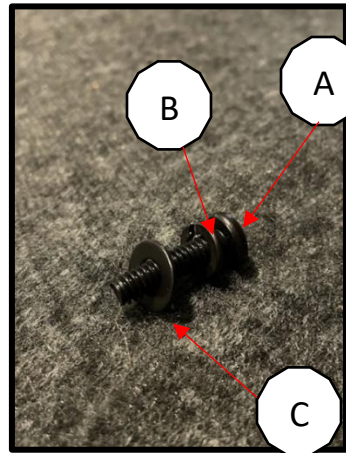


FIGURE 1.2



FIGURE 1.3

### FRONT DEFLECTOR PARTS LIST

PART NUMBER	DESCRIPTION	QUANTITY
B	¼" LOCK WASHER	10
C	¼" FLAT WASHER	10
D	¼"-20 X ½" MACHINE SCREW	10
E	10 SERIES TNUT (1/4"-20)	10

STEP 1 – INSTALL THE WIND DEFLECTOR HARDWARE AS SHOWN BELOW IN FIGURE 2.1. THREAD THE MACHINE SCREWS SLIGHTLY INTO THE TNUTS.

STEP 2 – LAY THE DEFLECTOR UPSIDE DOWN ON A FLAT SURFACE (FIGURE 2.2) AND FEED THE TNUTS THROUGH THE EXTRUSION AS YOU SLIDE IT DOWN THE DEFLECTOR.

STEP 3 – NOW THAT THE NUTS ARE ALL FED THROUH THE EXTRUSIONS, TURN THE ASSEMBLY OVER AND TIGHTEN THE MACHINE SCREWS UNTIL THE LOCK WASHERS ARE COMPRESSED (FIGURE 2.3).

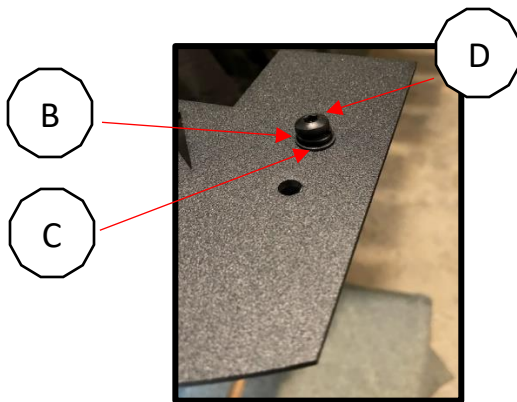


FIGURE 2.1

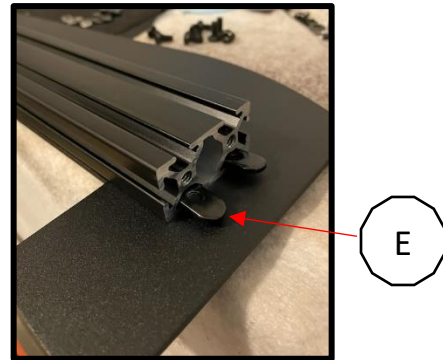


FIGURE 2.2



FIGURE 2.3

STEP 4 – THE WIND DEFLECTOR IS NOW READY TO BE BOLTED TO THE ROOF RACK (FIGURE 2.4).



FIGURE 2.4



Locate the plastic trim along the roof and remove on both sides.

Starting from the top of the windshield, measure back along the gutter and mark at 7" in the center of the gutter. Repeat on both sides.



Double check measurements before using a center punch to mark where the holes will be drilled. Drill the front holes, previously marked, out to 3/8". It's recommended to start small and work your way up to 3/8", using a drill stop is also highly recommend to avoid penetrating the head liner. (The roof is approximately 1/4" thick)

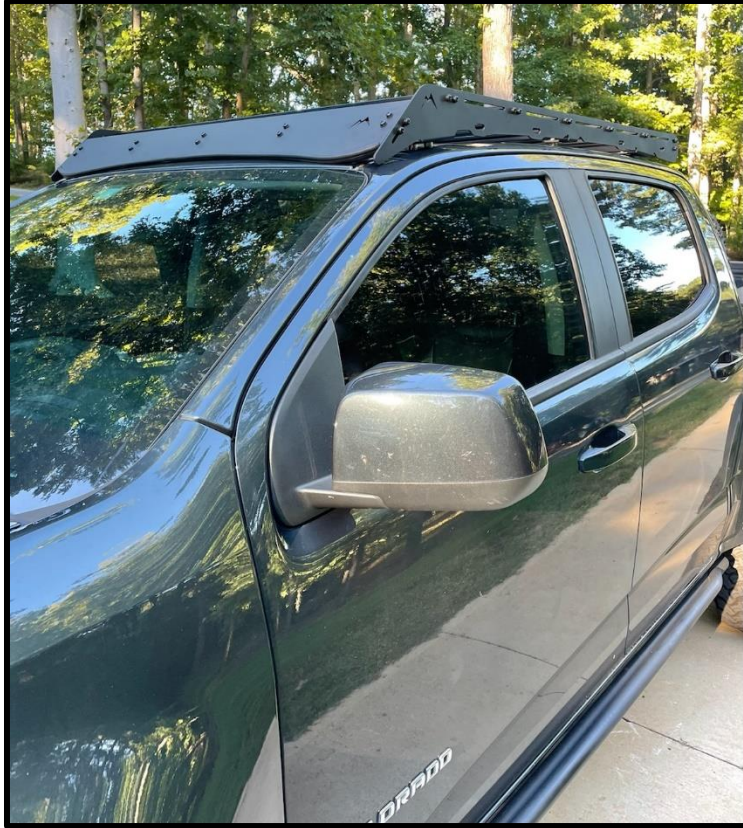


Apply RTV silicone to flange of the plusnut and insert it into the 3/8" hole. Using the provided bolt, washer, and hex coupler, compress the plusnut by tightening the top bolt while holding the hex couple in place with an end wrench until firmly snug. (DO NOT OVER TIGHTEN) Repeat the previous step on the other side.



After compressing the two front most plus nuts, place the assembled rack on the truck and loosely thread in the front two bolts. Ensure the rack is placed squarely on the truck before marking the remaining holes to be drilled. Remove the rack and repeat the previous steps to drill and install the plus nuts on the remaining mount locations. Apply a generous amount of silicone over the holes and install the (10) provided spacers. Place the rack back on the vehicle, resting on the spacers, and tighten the rack down using the provided hardware.





Install the remaining crossbars and check all fasteners. Your new rack is now ready for use!